

# Retail For Lease

## Palm Beach County

**PARK PLACE**, 5540-5580 N. Military Trail, Boca Raton, FL 33496

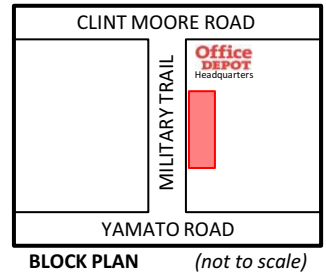


### TRAFFIC COUNTS

(Vehicles per Day)

Clint Moore Rd	-	26,151
Military Trail	-	40,910
Yamato Rd	-	43,766

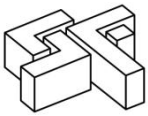
Provided By: Palm Beach County Traffic Division 2014



## Leasing Information

<b>Location</b>	16 acre new retail development site on Military Trail, north of Yamato Rd & South of Clint Moore Rd.			
<b>Availability</b>	64,000 SF Retail Center consisting of approximately: <ul style="list-style-type: none"> <li>• Building "A" - 20,000 SF Grocery Store / Anchor Space</li> <li>• Buildings "B" &amp; "C" - 30,000 SF of In-line Retail &amp; Restaurant Spaces</li> <li>• Buildings "D" &amp; "E" - 14,000 SF between 2 outparcel restaurant pads</li> </ul>			
<b>Property Amenities</b>	<ul style="list-style-type: none"> <li>• 64,000 SF Retail Center with excellent frontage and three access points on Military Trail.</li> <li>• Services extended trade areas of Boca Raton &amp; Delray Beach</li> <li>• Zoning: PMD</li> </ul>			
<b>Area Highlights</b>	<ul style="list-style-type: none"> <li>• Located between the world headquarters of Office Depot with over 2,300 employees and a new residential development consisting of approximately 400 apartment units.</li> <li>• Close proximity to Lynn University with approx. 1,800 students, Boca Raton Executive Airport, Florida Atlantic University with approx. 25,800 students and strong residential demographics.</li> <li>• Almost 96,000 Daytime Employees within a 3 mile radius.</li> </ul>			
<b>Parking</b>	Spaces:    Approx. 700 spaces - 10 / 1,000 SF			
<b>Demographics</b>		<u>1-mile</u>	<u>3-miles</u>	<u>5-miles</u>
	Population (2014 estimate):	4,875	65,808	225,512
	Population (2019 projected):	5,228	69,585	240,512
	Daytime Population:	16,290	95,733	176,308
	# of Households	2,384	29,270	107,494
	Average Income:	\$119,533	\$98,058	\$79,523
	Median Income:	\$89,815	\$63,792	\$50,872

Ross Feurring / Broker  
 RossFeurring@sfrealty.com  
 561-488-9100



# PARK PLACE

## SITE PLAN



Not to scale. Sizes & configuration subject to change.

## ELEVATIONS

5540 N. Military Tr. (Bldg "A")

20,000 SF



5550 N. Military Tr. (Bldg "B")

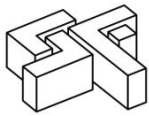
9,492 SF



5560 N. Military Tr. (Bldg "C")

20,510 SF





## Retail For Lease

## AVAILABLE SPACE

**5540 N. Military Trail (Bldg "A") 20,000 SF**

<u>Bay #</u>	<u>Bay Dimensions</u>	<u>Bay Size</u>	<u>Status</u>
100	161 x 120	20,000	Lease Pending

**5550 N. Military Trail (Bldg "B") 9,500 SF**

<u>Bay #</u>	<u>Bay Dimensions</u>	<u>Bay Size</u>	<u>Status</u>
200	20 x 50	1,000	
202	20 x 50	1,000	
204	20 x 50	1,000	
206	20 x 50	1,000	
208	20 x 50	1,000	
210	20 x 50	1,000	
212	20 x 50	1,000	
214	20 x 62.5	1,250	
216	20 x 62.5	1,250	

**5560 N. Military Trail (Bldg "C") 20,500 SF**

<u>Bay #</u>	<u>Bay Dimensions</u>	<u>Bay Size</u>	<u>Status</u>
300/302/304	62.5 x 64	4,000	Lease Pending
306/308	50 x 60	3,000	Lease Pending
310/312	40 x 60	2,400	Lease Pending
314	25 x 60	1,500	
316	28 x 60	1,680	
318	20 x 66	1,320	
320	20 x 66	1,320	
322	20 x 66	1,320	
324	20 x 66	1,320	
326/328	40 x 66	2,640	

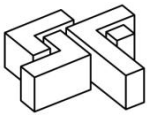
**5570 N. Military Trail (Bldg "D") 7,250 SF**

<u>Bay #</u>	<u>Bldg Dimensions</u>	<u>Bldg Size</u>	<u>Status</u>
400	100 x 72.5	7,250	

**5580 N. Military Trail (Bldg "E") 6,800 SF**

<u>Bay #</u>	<u>Bldg Dimensions</u>	<u>Bldg Size</u>	<u>Status</u>
500	68 x 100	6,800	

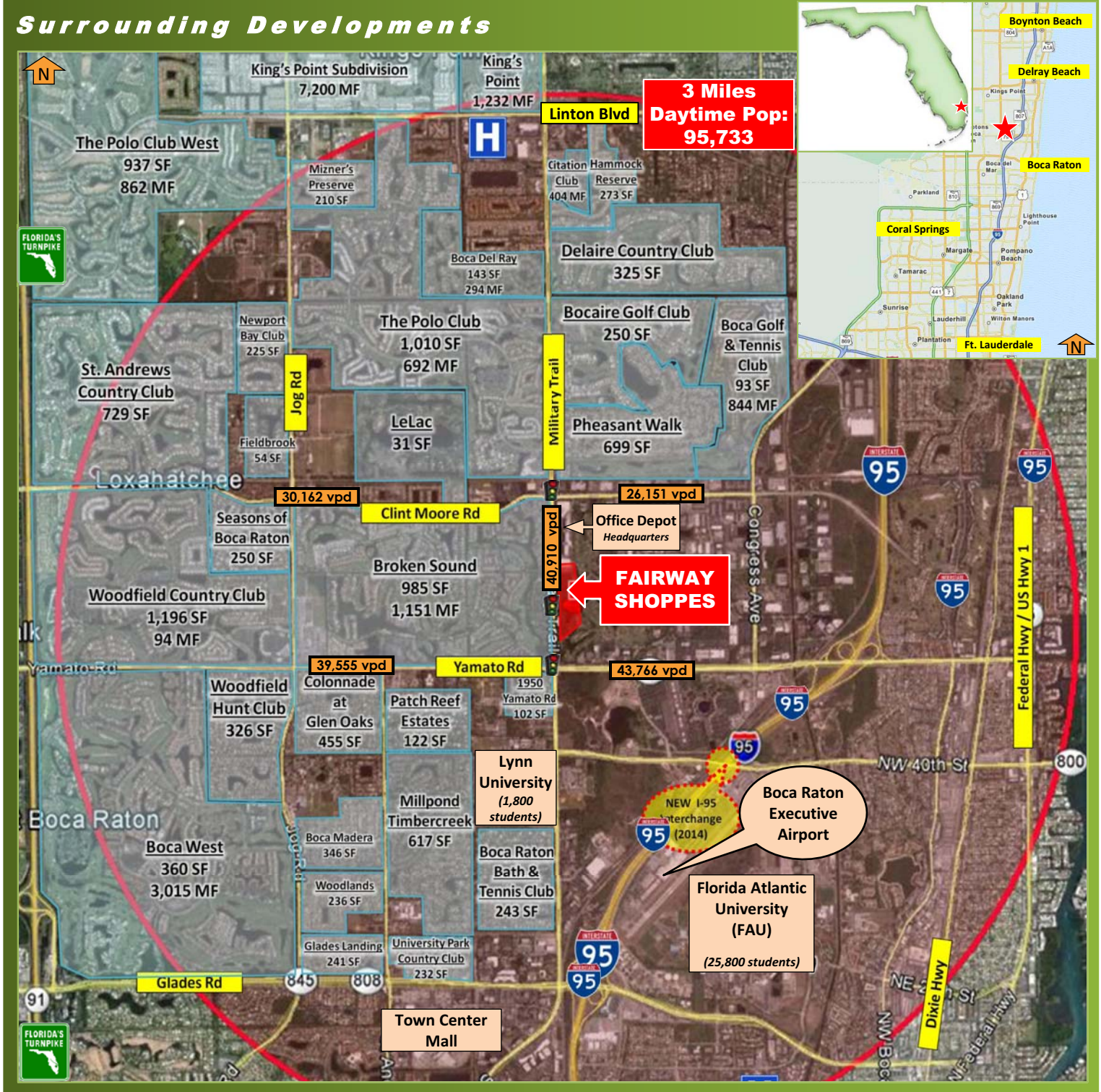
Sizes & configuration subject to change.



# Retail For Lease Palm Beach County

## PARK PLACE, 5540-5580 N. Military Trail, Boca Raton, FL 33496

### Surrounding Developments



**3 Miles  
Daytime Pop:  
95,733**

**FAIRWAY  
SHOPPES**

2014 Traffic Counts provided by Palm Beach County Traffic Division

2200 Butts Road, Suite 300, Boca Raton, FL 33431 Fax 561-482-0181 www.sfrealty.com

Ross Feurring / Broker  
RossFeurring@sfrealty.com  
561-488-9100